

CLIP glass door hinges



CLIP top/CLIP



Features

- 94° opening angle
- 3-dimensional adjustment
- For glass thickness from 4.5 to 7mm
- Side adjustment of +.5 to -.3.5mm
- Fixing screws included

Mounting plates
BLUMOTION for doors

pages 43-47

page 73

Minimum Reveal

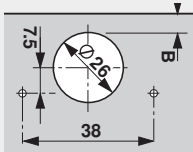
| | | | | |
|------------------|---|---|---|------|
| 0 | 0 | 0 | 0 | 5.5 |
| 0 | 0 | 0 | 0 | 6 |
| 0 | 0 | 0 | 0 | 6.5 |
| 0 | 0 | 0 | 0 | 7 |
| 4.5 | 5 | 6 | 7 | B |
| T Door thickness | | | | Bore |

Cross reference the door thickness and bore distance to assure that doors won't bind when opened.

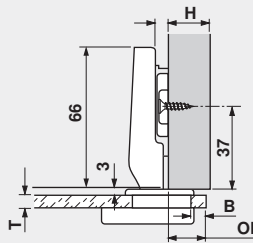
See back cover fold out for more specifications →

Panel cabinet applications

Boring pattern



Overlay door



Straight arm hinges

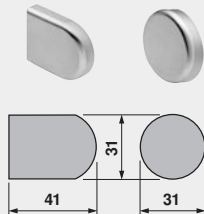
Self close

Screw on 75M4100

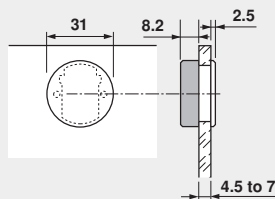
| | | | | | | |
|-------|-----------------|----|------|----|------------|----|
| 0 | 15.5 | 16 | 16.5 | 17 | 6 | 19 |
| 3 | 12.5 | 13 | 13.5 | 14 | 9 | 22 |
| 6 | 9.5 | 10 | 10.5 | 11 | 12 | 25 |
| 9 | 6.5 | 7 | 7.5 | 8 | 15 | 28 |
| H | 5.5 | 6 | 6.5 | 7 | P | S |
| Plate | B Bore distance | | | | Clearances | |

10 fixed distance

Cover caps for door front (required)

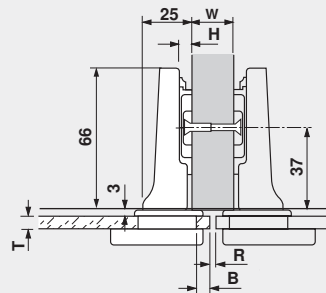


Both available in:
G = Gold polished
S = Black
CR = Chrome polished



D - shape 84.4120
Round 84.4140

Twin overlay doors



Half-cranked hinges (9.5mm)

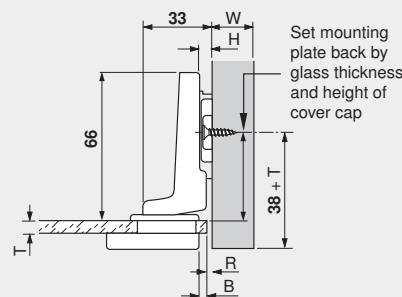
Self close

Screw on 75M4200

| | | | | | | | |
|-------|-----------------|---|-----|----|-------|------------|----|
| 0 | 4 | 3 | 1 | .5 | 16 | 15 | 25 |
| | 7 | 6 | 5 | 4 | 19 | | |
| H | 5.5 | 6 | 6.5 | 7 | W | P | S |
| Plate | B Bore distance | | | | Panel | Clearances | |

.5 fixed distance

Inset door



Full-cranked hinges (18mm)

Self close

Screw on 75M4300

| | | | | | | |
|-------|-----------------|---|-----|---|------------|----|
| 0 | 2.5 | 2 | 1.5 | 1 | 23.5 | 33 |
| H | 5.5 | 6 | 6.5 | 7 | P | S |
| Plate | B Bore distance | | | | Clearances | |

- 8 fixed distance