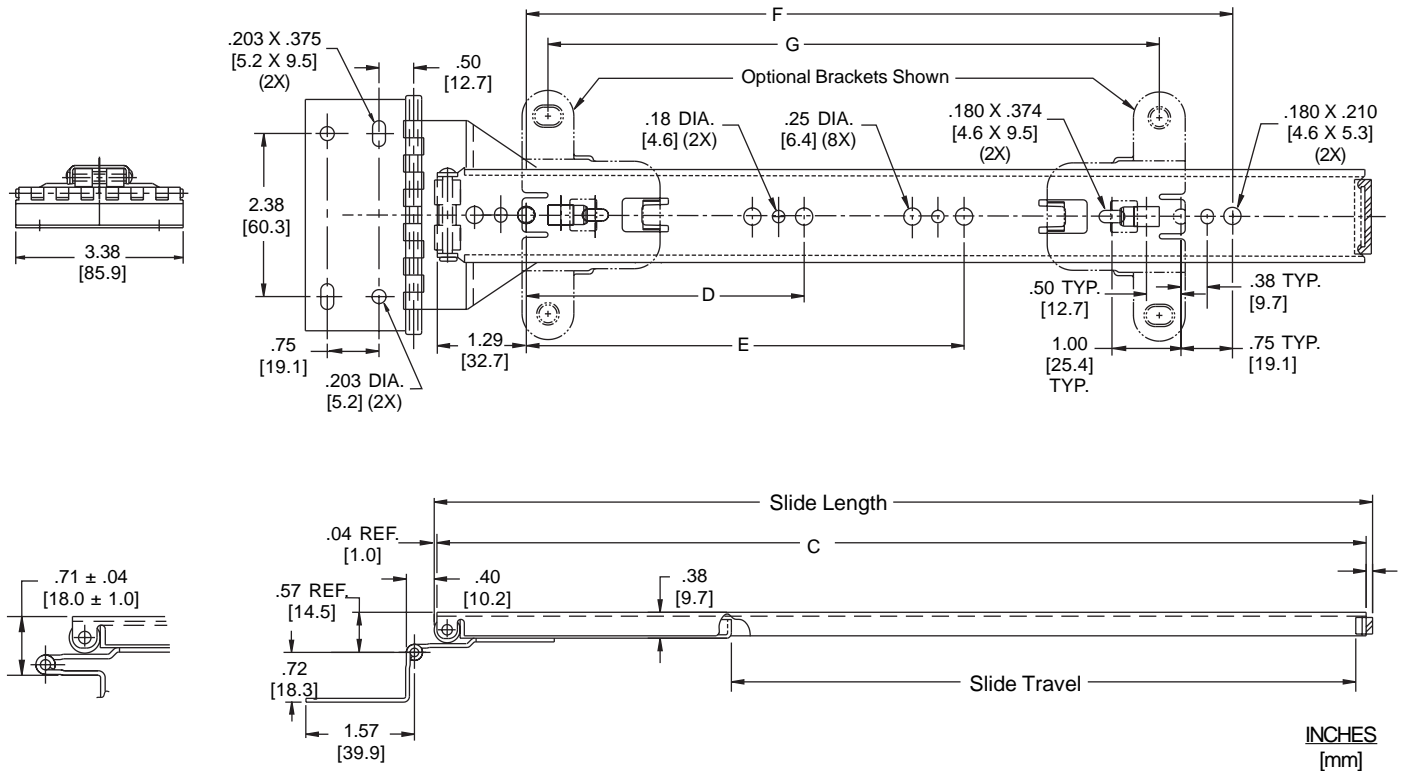
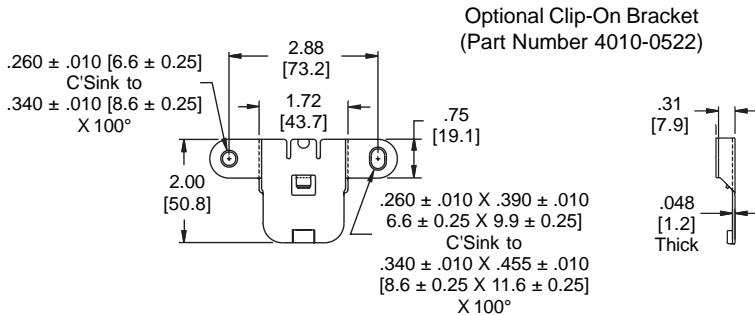
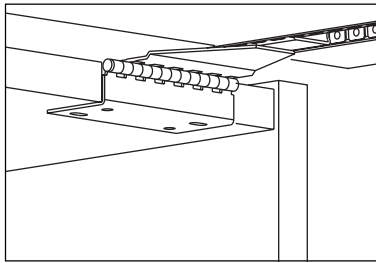


APPLICATIONS: Wood storage cabinets in open office systems, medical office storage cabinets and other cabinets with doors rotating upward and retracting over the top. **Not recommended for vertical applications.**

Over the Top Flipper Door Slide®
Up to 30 lb. [14 kg.] Capacity



- Finish** Bright electro-zinc (C) or black zinc* (CB) plating available
- Length** 10" to 24" [252mm to 608mm]
- Travel** See chart
- Load** Up to 30 lbs. [14 kg.] per pair
- Door Sizes** Up to 36" [914mm] wide doors
- Hardware** #8 slotted pan head or slotted binding head screws
- Also** Silenced open and closed

* Minimum order quantities may apply.

Part Number	Slide Length	Slide Travel	C	D	E	F	G
1145-10	9.94 [252.5]	6.32 [160.5]	9.81 [249.2]			6.60 [167.6]	5.45 [138.4]
1145-12	11.94 [303.3]	8.32 [211.3]	11.81 [300.0]	5.04 [128.0]		8.82 [224.0]	7.45 [189.2]
1145-14	13.94 [354.1]	10.32 [262.1]	13.81 [350.8]	5.04 [128.0]		8.82 [224.0]	7.45 [189.2]
1145-16	15.94 [404.9]	12.32 [312.9]	15.81 [401.6]	5.04 [128.0]		12.60 [320.0]	11.23 [285.2]
1145-18	17.94 [455.7]	14.32 [363.7]	17.81 [452.4]	5.04 [128.0]		13.86 [352.0]	12.49 [317.2]
1145-20	19.94 [506.5]	16.32 [414.5]	19.81 [503.2]	5.04 [128.0]		16.38 [416.0]	15.01 [381.3]
1145-22	21.94 [557.3]	18.32 [465.3]	21.81 [554.0]	5.04 [128.0]	13.86 [352.0]	18.90 [480.0]	17.53 [445.3]
1145-24	23.94 [608.1]	20.32 [516.1]	23.81 [604.8]	5.04 [128.0]	13.86 [352.0]	18.90 [480.0]	17.53 [445.3]

Installation Instructions

Model 1145 Wood Applications - 3/4" [19.1mm] min. thick door

CAUTION: During operation, the door may be over-rotated, stressing the slide-to-door mounting screws. When the clip-on brackets aren't used, mounting screws are quite short and may not hold sufficiently in particle composition doors such as MDF. Apply hot melt glue or similar adhesive to bottom of rout as slides are installed for an extra margin of safety.

1. Whenever possible, use of the clip-on mounting brackets is recommended. These will allow use of 5/8" long screws for full thread purchase in softer door materials. See Figure 1 for routing dimensions.
2. Clip brackets into special slots in slide.
3. Mount slides using screws in slotted holes only. This allows adjustment of door to cabinet opening. After fitting, install screws in round holes on brackets to secure in position.
4. Rout case top to achieve desired gap. Move hinge assembly to bottom of door and align hinges to predrilled holes. See Figure 2.
5. When clip-on brackets cannot be used, rout door for slides as shown in Figures 3 and 4. Routing to a depth of 11/32" [8.7mm] will minimize gap behind door.
6. Attach slides to door using short (7/16" max. length) screws. Check alignment to cabinet, adjust slide locations as required, and mark slide locations. Remove slides and reinstall using hot-melt or similar high-strength adhesive. Install screws (minimum of 4) using polymer glue, ensuring screw heads do not obstruct ball retainer.

Slide Ordering Instructions

Complete your order for Accuride model 1145 by specifying the following:

Total Required Slides _____ 100 Pair _____ C 1145 -16 D
 Slide Finish _____
 Slide Model _____
 Slide Length _____
 Optional Polybag Packaging _____

Optional Clip-On Brackets - Ordered Separately

Optional Clip-On Brackets

Clip-on brackets are unhandled. They are ordered in **bulk** or as a **kit**. For **bulk**, order 4 brackets for each pair of slides ordered.

Total Clip-On Brackets Required _____ 200 Each 4010-0522 -CE
 (For 50 pair slide order)
 Bracket Part Number _____
 Bracket Finish _____
 (For zinc finish order "CE"; for black finish order "BE")

For **kits**, order 1 bracket kit for each pair of slides ordered. Each kit contains 4 clip-on brackets and 8 bracket mounting screws.

Total Kits Required _____ 50 Each 4180-0325-XE (Zinc Finish)
 (For 50 pair slide order) _____ 50 Each 4180-0326-XE (Black Finish)
 Kit Part Number _____

Packaging

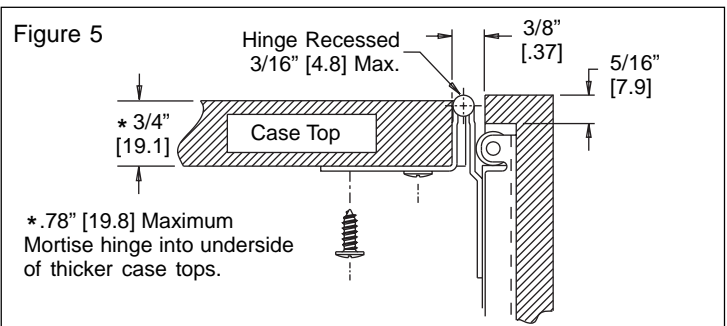
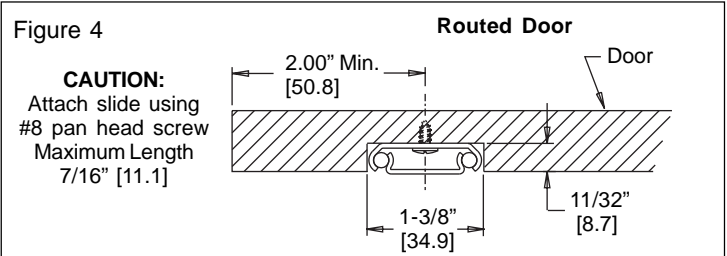
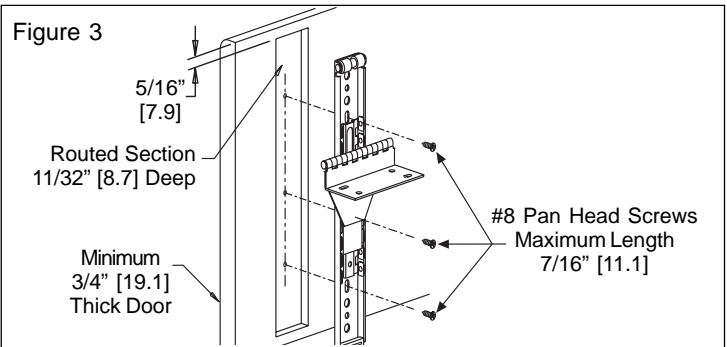
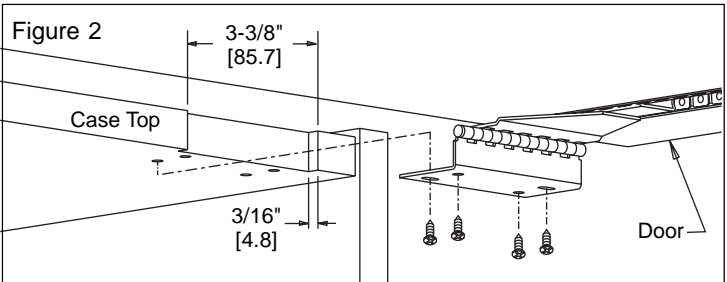
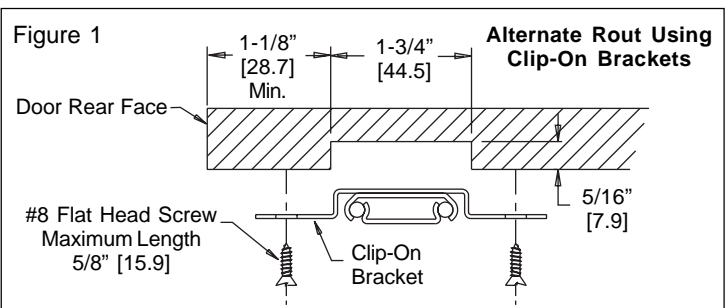
Distributor (D) Pack: All lengths are packaged 4 pair per box. Polybag includes 2 slides, 4 clip-on brackets, mounting screws, and installation instructions.

Bulk (P) Pack: Lengths 10" - 20" are packaged 12 pair per box. Lengths 22" and 24" are packaged 6 pair per box. Mounting screws ordered separate.

Specifications

Slide members and ball retainers: Cold rolled steel
 Ball bearings: Acetal polymer and carburized steel

Copyright © 2002 Accuride International Inc. Printed in U.S.A. 3700-9410(9409)-MK561-R4-0203



Note: Specifications, materials, prices, terms, and delivery are subject to change without notice.

Accuride

ACCURIDE INTERNATIONAL INC.

12311 Shoemaker Avenue
 Santa Fe Springs, CA 90670
 TEL (562) 903-0200
 FAX (562) 903-0208
 www.accuride.com

Manufacturing, Engineering, and Sales
 United States • Germany • Japan • Mexico • United Kingdom

Copyright © 2002 Accuride International Inc. Printed in U.S.A. 3700-9409(9410)-MK069-R4-0203